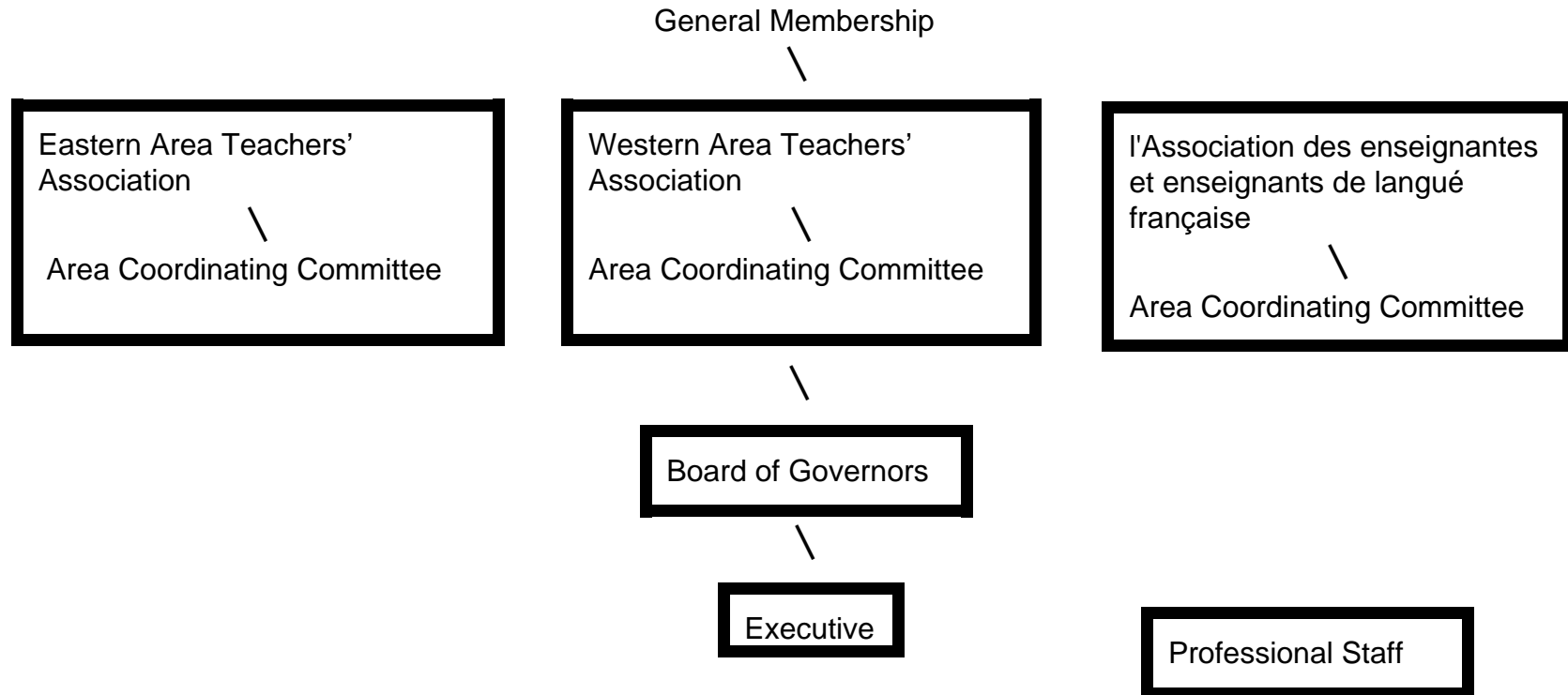


Prince Edward Island Teachers' Federation

ORGANIZATIONAL CHART



1. The Board of Governors is the policy making body of the Federation.
2. Members of the Board of Governors are elected in each school as provided by the By-Laws.
3. The Area Coordinating Committee is composed of members of the Board of Governors from the Area Association, an Area Coordinator, and an Assistant Coordinator; the latter two are elected by the membership of the Area Association.
4. The Executive is composed of five Members-at-Large elected by the membership of Area Associations and four members elected by the Board of Governors.

HOW THE FEDERATION FUNCTIONS

MEMBERSHIP -----

Teachers submit resolutions to an Area Association meeting. Resolutions should be submitted to the Area Co-ordinator or his/her representative for presentation to the Area Association's Annual Meeting. Also teachers submit resolutions directly to the meetings of the Board of Governors.

AREA ASSOCIATIONS ----- RESOLUTIONS

Resolutions passed at an Area Association meeting are:

1. Submitted to the Area Coordinating Committee for action if the resolution pertains to local circumstance and is not requesting a provincial policy or action.
2. Submitted to Federation House for presentation to the Board of Governors. Usually such resolutions are presented to the Annual Meeting of the Board of Governors.

BOARD OF GOVERNORS---- RESOLUTIONS

The Board of Governors determines PEITF policy and direction through its acceptance of resolutions at the Annual Meeting, Semi-Annual Meeting, or at a Special Meeting.

Resolutions may be received by the Board from Area Associations, the Executive, and individual Board Members, school staffs, special associations and individual members. Normally resolutions are prepared in time for presentation to the Annual Meeting of the Board.

EXECUTIVE----- RECOMMENDATIONS

The role of the Executive is two-fold:

1. It prepares recommendations for the Board of Governors - including an annual budget.
2. Between meetings of the Board of Governors, it carries out, or causes to be carried out, the intention of the resolutions and recommendations which have received the approval of the Board of Governors.

FUNCTIONING GROUPS WITHIN PEITF

Committees are appointed by the Executive prior to September each year; however, others are established as the need arises. Each year general and specific guidelines are established by the Executive for committees.

<u>STANDING COMMITTEES</u>	<u>GENERAL GOAL</u>
Annual Convention Planning	- To be responsible for all aspects of the PEITF Annual Convention to be held in the Fall of each year.
Awards, Grants & Projects	- To consider and make recommendations with regard to the granting of scholarships and bursaries and to select successful applicants for the same, subject to the approval of the Executive.
Constitution & By-Laws	- To consider and suggest recommendations relative to changes in the Act of Incorporation and By-Laws.
Curriculum, Professional Development, Teacher Education	- To monitor the implementation of Curriculum changes in the province, to identify the professional development needs of the membership and programs to meet those needs, and to monitor teacher education programs.
Economic Welfare	- To improve economic welfare benefits for teachers.
Diversity in Education	- To keep current on equity in education issues and develop recommendations for the Executive.
Finance & Property	- To develop budget proposals and make recommendations regarding: <ul style="list-style-type: none"> (1) Financial matters of the Federation; (2) Maintenance and/or improvement of property.
Nomination	- To follow the directives of the Constitution and By-Laws in the election of an Executive.
Pension	- To work towards the improvement of the Teachers' Superannuation Act.
Resolutions	- To carry out the directives of the By-Laws governing presentation of resolutions to the Board of Governors.

OTHER COMMITTEES

GENERAL GOAL

Ethics

- To act in accordance with the provisions of the By-Laws on ethical conduct.

Insurance Trustees

- To oversee all aspects of the PEITF Insurance Plan.

Social

- To organize a PEITF Mixed Curling Bonspiel for PEITF members.

AD HOC Committees are established from time to time to study specific issues.

NOTE: See Section XII for committee membership and detailed terms of reference.

SPECIAL ASSOCIATIONS WITHIN PEITF

Special Associations within the Federation are governed by the PEITF By-Laws and have as general objectives:

- (a) To improve practice in a special field by increasing members' knowledge and understanding;
 - (b) To act as a clearing house for ideas and a source of trends and new developments; and
 - (c) To furnish recommendations and advice to the Executive and other committees of PEITF on matters affecting the special subject field.
1. Association provinciale des éducateurs en langues secondes/Provincial Association of Second Language Educators (APELS/PASLE)
 2. Eastern School District Principals' Association
 3. P.E.I. Physical Education Teachers' Association
 4. P.E.I. Home Economics Teachers' Association
 5. P.E.I. Association of School Administrators
 6. P.E.I. Industrial Technology Teachers' Association
 7. P.E.I. Senior High School Principals' Association
 8. P.E.I. Math Teachers' Association
 9. P.E.I. Music Educators' Association
 10. P.E.I. Teacher-Librarians' Association
 11. P.E.I. Association of Special Education Teachers
 12. Western Association of School Administrators
 13. P.E.I. Visual Arts Teachers' Association
 14. P.E.I.T.F. School Counsellors' Association

NOTE: The P.E.I. Retired Teachers' Association is affiliated with the Federation.